

KONICA MINOLTA

Accurio**Pro** Dashboard



AccurioPro Dashboard

RETHINK PRINTROOM EFFICIENCY

Giving Shape to Ideas

DEVICE MONITORING MADE EASY

RETHINK PRINTROOM EFFICIENCY

AccurioPro Dashboard captures the shopfloor with great detail enabling its users to reduce downtime as well as costs related to production. At the same time, the software helps maximize the overall productivity: AccurioPro Dashboard analyses the entire production process automatically collecting and evaluating device information – and thus adds intelligence to your print-related business decisions.

Konica Minolta's new software tool powers digital experience (DX) in on-demand printing. Just like your production activity partner, AccurioPro Dashboard reliably collects accurate data, then aggregates and analyses this from a unique perspective in order to furnish you with key findings that will improve your overall productivity.

Today's markets demand print products faster, cheaper, and of higher quality. AccurioPro Dashboard does more than just digitising and visualising production data. Our innovative solution help you work smarter – and AccurioPro Dashboard will enable you to speed up production-related management decisions increasing your actual production capacity.

AccurioPro Dashboard comes in two versions, Essential and Ultimate. The rich featured entry-level solution, AccurioPro Dashboard Essential, offers a highly attractive price/performance ratio to help you leverage your production data from essential production perspectives, such as print jobs and print media. The Ultimate version features a menu called AccurioPro Dashboard Ultimate Single Item, which is a full cloud service and provides more intelligent and simple information platform for reducing print downtimes, or increasing production capacities.



YOUR KEY BENEFITS

- Fast, simple, and straightforward operation in the web browser of your choice
- Provides fast, accurate and comprehensive data to reduce costs and increase the overall productivity
- Enables data-driven production
- Displays the real-time status of print devices
- Makes production performance data more secure and accurate
- Access anytime, anywhere in the cloud (Ultimate only)
- Varied display information depending on user roles, i.e. operator, executive, manager (Ultimate only)

MARKETS & APPLICATIONS

RETHINK OPPORTUNITIES

Many kind of different industries will benefit from this application. Here are some use cases:

Digital printers:

Automating production tasks, coordinating jobs, or ordering paper are only a few tasks of today's digital printers. AccurioPro Dashboard saves time for operators and managers, collecting all job-related data essential for proper planning of upcoming print jobs. Collecting data manually by hand is a thing of the past. With Accurio-Pro Dashboard, the user obtains an easy-to-operate application that provides machine- as well as media-related data.

Cataloguers:

For cataloguers, knowing the exact time required to print a catalogue series is of major importance. Other indispensable production details are for instance the amount of paper and staples used for the job as this allows to calculate the total costs of the job.

Product manufacturers:

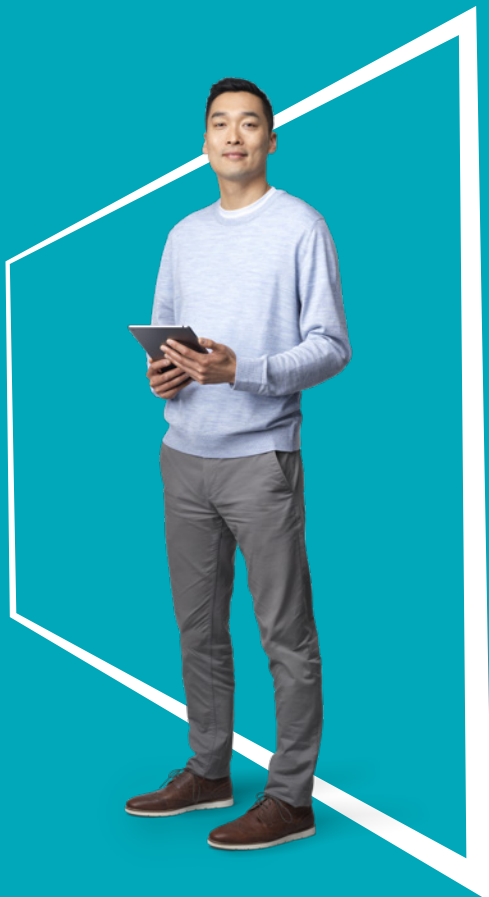
For product manufacturers, on-demand printing of labels or instruction manuals is very important. In this context, an overview of the utilisation of the printing systems is essential. AccurioPro Dashboard not only makes the printing process transparent. It also enables operators to determine for instance whether specific output systems need to be included in a production line or whether they can be spared.

Copy Shops:

Copy Shops are particularly interested in tracking which jobs were printed on which systems to better estimate the costs for e.g. power, hardware and media. Especially in this business area it is also important to see which system is printing or in idle mode.

Financial institutions:

These organisations are usually looking to reduce costs with accurate data. Monitoring the overall running costs and tracking consumables usage helps identify potential savings and prepare performance-based cost calculations.





CHOOSE THE PRODUCT VERSION THAT BEST SUITS YOUR SPECIFIC NEEDS

RETHINK POSSIBILITIES

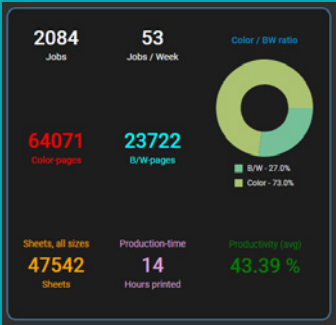
AccurioPro Dashboard Essential

AccurioPro Dashboard Essential captures data automatically, such as jobs, machine efficiency, consumables usage, waste, production counts, and other variables. With this tool the user can save a lot of time and money by eliminating the need to collect data manually. Another great advantage of AccurioPro Dashboard is the monitored machine activity including uptime and downtime as well as real-time equipment performance – customers can

filter the views as they need them, for example show all jobs with a dedicated media type that have been printed on selected devices. The real-time tab boosts the profitability with optimised print performance. Knowing when printers are idle or when productivity drops as a result of incorrect settings facilitates adjusting device uptime and improving the overall usage for streamlined efficiency.

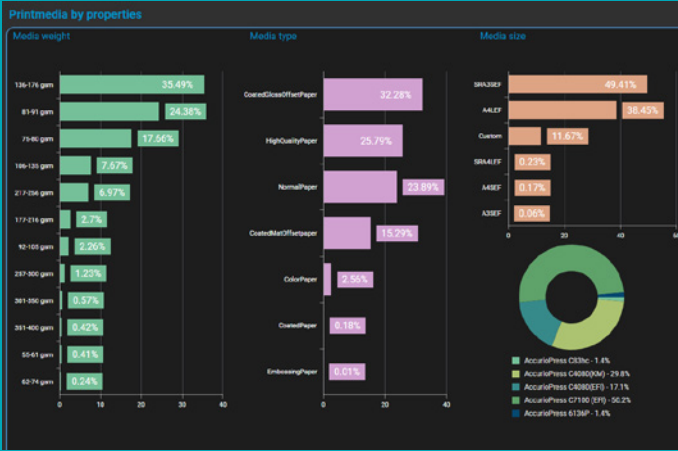
Via the real-time information tab, the operator can call up productivity related information at any time, such as the number of active devices, the daily print volume in relation to the production hours, or information about the prints per minute. Also very important is the actual status including the information how long the actual print run will take until completion. Details like remaining sheets and remaining print time are only some of the values displayed for each device.

The manager will also appreciate the Quick Facts tab, which provides a summarised overview about the number of jobs per week, the pages printed in colour and BW, or for example the number of jobs printed within a selected timeframe.



In addition to the summarised views, the operator as well as the manager can study the detailed tabs for print jobs or productivity. On the Print Jobs tab, the user can set a filter for all jobs per device for the job status. He could for example review only the completed jobs for all colour devices; or could set the filter for cancelled jobs to evaluate why a device is not performing as it should. To be sure why the performance value is lower than expected for this type of device he could review if the job was completed and how many staples were used. Jobs can also be sorted very easily by clicking on the header of the table. Last but not least, the job list can also be filtered by job type like print job, copy job or adjustment job.

Also important is the information displayed on the Print Media tab. At every production site, the calculation and order process for paper is very important and has a huge impact on the price of the print job. Not only the availability of paper is important but also when to load it in a device. Imagine paper had to be switched after each job, this would dramatically increase the job preparation time. Displaying the media usage in total filtered by devices as well as by format allows to plan jobs in a more efficient way. If a media type is selected by the user, the software shows the percentage of this media in production as well as the pages printed on individual devices. Media can also be reviewed by grammage and size to check if, for future jobs, it might make more sense to order more of one paper quality that best suits the



requirements and eliminate another more costly media. The operator can also filter by cancelled jobs and see which media has mostly led to paper jams.

On the last tab, “Productivity”, the user can review jobs by performance. Of course, a basic job produced without inline finishing is faster in completion than a job involving half-folding. But for the manager it is sometimes also interesting to review the performance between similar jobs on different devices in order to plan for future allocation of the right jobs on the most performant devices.

AccurioPro Dashboard Ultimate

This is the product version for professionals: AccurioPro Dashboard Ultimate delivers very detailed reports and compares the productivity of consecutive weeks. In today's print environment, a print operation very often generates a huge amount of data without providing proper insight. AccurioPro Dashboard Ultimate gives detailed recommendations on how to improve the uptime of the devices in the print room. Another highly informative feature is that the manager can see how much time has been spent on the user panel, refilling paper, or fulfilling other operator tasks.

AccurioPro Dashboard facilitates predicting the upcoming production as well as checking whether the print job was completed in the expected time. If production needed longer than expected, the operator can check the tips to analogize why this happened. This allows to make business decisions from a broader perspective, such as whether production activities or the order situation should be improved.

In case of small-lot, multi-variety digital printing, where the volume of work increases and decreases frequently, the machine productivity rate is usually not stable. The attempt should however always be to maximize it so that a higher overall productivity can be achieved when the volume of work is increasing. This application allows checking the productivity rate at a glance.

AccurioPro Dashboard Ultimate allows changing the reference period. This helps to check whether a temporary or long-term change has occurred and to consider temporary or permanent measures in production activities.

Operators can check production results such as the number of jobs, the number of output sheets, and the number of pages printed in colour and monochrome as well as the number of machine errors. Checking the important KPIs of production activities is always a good idea – AccurioPro Dashboard Ultimate provides the transparency required to improve these figures.

With the job drill-down function, the operator can review production results on days when there is a large gap between the expected and the actual printing time. By selecting a specific job, it is possible to drill down into the details of the job and review exactly when the job was printed, on which machine, what the print specifications were, how long it took, and what machine operation was involved. This facilitates finding out which factors have the most impact on production efficiency. In addition to this, machine operators in the field can identify the most frequent causes of machine stoppages. This is useful for reviewing daily production activities at the print floor level. These data can also be viewed by the service engineer in charge, helping operators to request maintenance for the machine.



10 GOOD REASONS

for AccurioPro Dashboard



1. PRECISE INFORMATION FOR ALL USER LEVELS

Provides the right amount of detail for everyone, from management to field operators. There is no need to waste time with unnecessary information.



2. ENGAGING INTERACTION

Using AccurioPro Dashboard is highly intuitive for experienced as well as new users



3. EFFICIENT CONSUMABLES PURCHASING

... is ensured by detailed reporting on media usage and run rate for dedicated periods.



4. YOU'VE GOT THE CHOICE

Choose the application that suits you best – on-premise or cloud-based.



5. NO MORE MANUAL DATA COLLECTION

Eliminates the need for data compilation and reporting, saving time and money. Data are fresh and not outdated when reports become available.



6. MORE INTELLIGENT, MORE PREDICTIVE

AccurioPro Dashboard delivers not just records. Discover very detailed data-driven reports helping you plan upcoming jobs properly.



7. SHORTEN YOUR LEAD TIMES

With AccurioPro Dashboard, your production is more predictable and faster than ever.



8. LOWER YOUR PRODUCTION COSTS

... and increase your margins with AccurioPro Dashboard. Saving you time, effort and money, our print room monitoring solution will enhance your competitiveness and boost your business.



9. COMPLEMENTARY TO ALL YOUR EXISTING PRESSES

Fully supported by all actual Konica Minolta digital presses.



10. USER ROLES WITH DIFFERENT VIEWS

AccurioPro Ultimate is a cloud-based application that displays reports based on the user role to suit the requirements of each individual user.



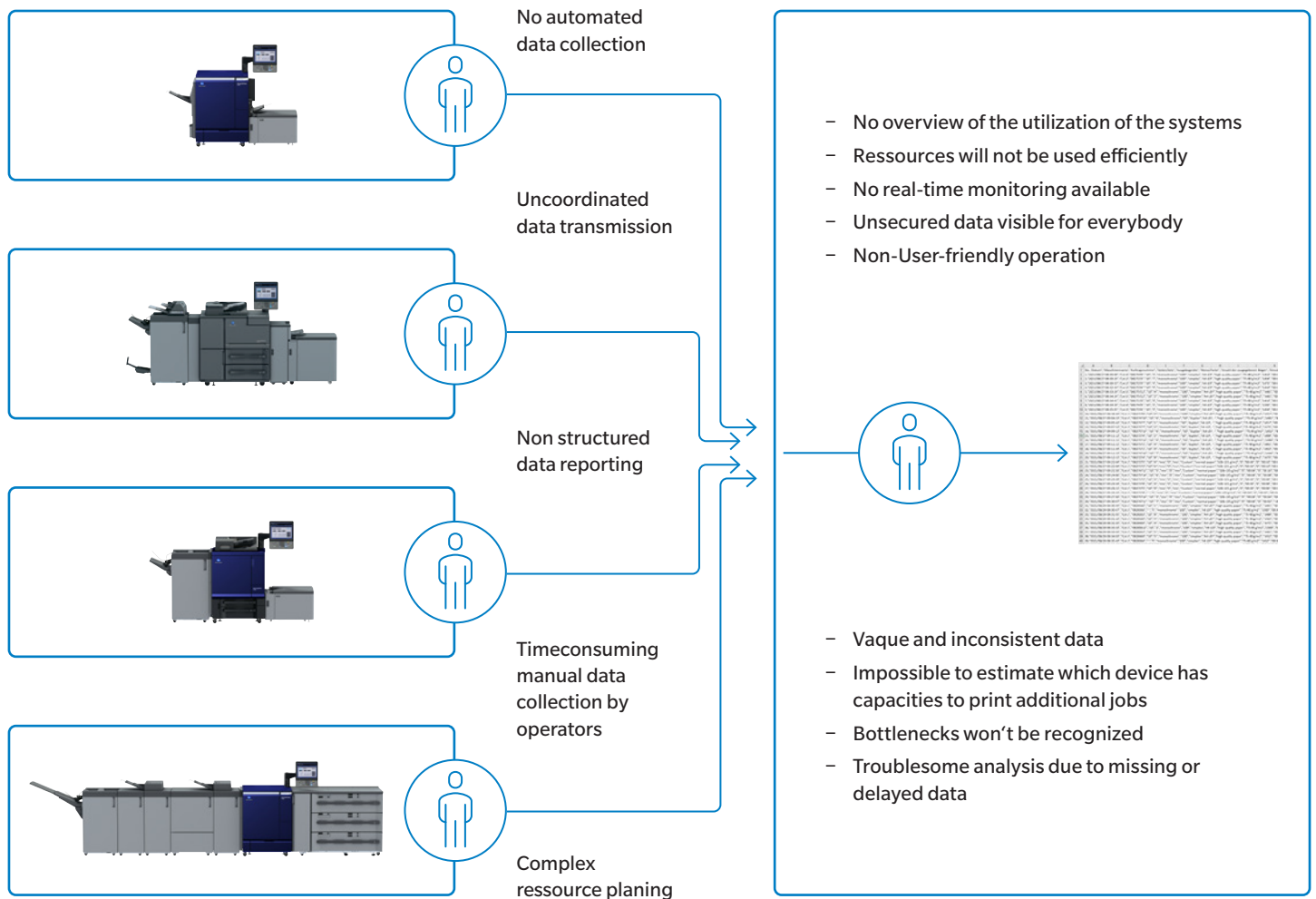
FEATURES

RETHINK YOUR POSSIBILITIES

Features			Product	
Category	Feature type	Details	Essential	Ultimate
General	Platform	On-Premise application	✓	-
		Cloud application	-	✓
General	General operation	Log in/Log out	✓	✓
		Printer registration/deletion	✓	✓
		User registration/deletion	✓	✓
		Change user password by user or manager	✓	-
		Different user roles	✓	✓
		Language selection	✓	✓
		Language selection after Login	✓	-
		License activation/ deactivation	✓	✓
Data collection	Job data collection	Collect ID or file name of a job	✓	✓
		Collect job related values like number of printed pages, number of sheets and colour information	✓	✓
		C collects detailed media information (type/weight/size)	✓	✓
	Machine data collection	Collect the device related values like ID, etc.	✓	✓
		Get print time	✓	✓
Data aggregation	Machine data aggregation	Get the real-time machine status	✓	-
		Aggregate machine operation information	✓	✓
	Job data aggregation	Aggregate job information	✓	✓

Features			Product	
Category	Feature type	Details	Essential	Ultimate
Data analysis	General analysis	Select reference period by date selection	✓	-
		Simple Checkbox-selection of devices to create quickly a detailed report	✓	-
	Job analysis	Filtering the job list by job type and job status	✓	-
		Count and list the number of sheets and print time for each job	✓	✓
		Display machine information for each job	✓	✓
	Machine analysis	Analyze machine utilization trend	✓	✓
		Count and graph the print results.	✓	✓
		Display print volume distribution for selected devices	✓	-
		Display print time distribution for all devices	-	✓
		Display finishing information for each job	✓	-
		Display current PPM in comparison to estimation	✓	✓
		Displays the trend of production (PV) for a selected time period	✓	✓
		Aggregate the jobs canceled for each machine	✓	-
		Aggregate the jobs completed for each machine	✓	✓
	Paper analysis	Aggregate and display frequently used paper types, weight and size	✓	-
		Display statistics based on selected media attribut for a selected timeframe	✓	-
		Display volume distribution for a selected media attribut for the selected devices	✓	-
	Productivity analysis	Aggregate job list by finishing mode	✓	-
		Count and display performance for each job	✓	-
Decision of Action	Discovery action	Aggregate and displayed Print time, interruption time, preparation time, and idle time for each machine.	-	✓
		Aggregate and list the number of troubles that occurred for each machine	-	✓
		Aggregate and display printing time, interruption time for each job	-	✓
		Aggregate and list the number of troubles that occurred for each job	-	✓
		Aggregate and display the reasons which caused a job interruption	-	✓
		Dedicated views for each role like manager/production management or operator	-	✓
		Shows detailed reasons when the trend of device utilization has changed	-	✓
		Shows detailed reasons when print time has changed	-	✓
	Decision action	Provide CSV download that summarizes the points for improvement	-	✓

MANUAL WORKFLOW BEFORE



AUTOMISED WORKFLOW AFTERWARDS



Collect accurate
data automatically
from the devices

- Different views due to multiple filter possibilities
- Secured data-access. views are only available for registered users
- Flexible timeframe selection
- Save time, money and resources
- Make decisions based data driven analytics
- AccurioPro Dashboard Essential offers also a real-time overview for your devices
- Merging data automatically into the database

Data
Collector



Essential



Ultimate



- Accurate and consistent data analysis
- Free device slots could be review easily
- Discover free slots and improve utilization and profitability and ensure a fast ROI
- No human intervention mandatory
- User-friendly operation
- Production increase due to more precise job planning



KONICA MINOLTA